

# VINDETO



Educational resources

[www.vindetoprocurement.co.za](http://www.vindetoprocurement.co.za)

## Human Anatomy Model 27cm – 8 Piece



Explore the major body systems with this 3D table-top sized human anatomy model. Hand painted in bright and natural colours, this large scale human anatomy model will enable you to demonstrate how our internal organs work together. The model includes 8 removable parts which fit into the torso – lungs, heart, stomach, liver and intestines. Fully illustrated colour human anatomy guide included.

Torso stands 27 cm high and is mounted on a sturdy ABS base.

Item size: 27 x 13.5 x 6 cm

## Heart Anatomy Model With Stand –14cm 35Pc

Build your own detailed 3-D model of the human heart with 31 colourful, hand-painted pieces.

The assembled model stands 14cm high on its display stand.

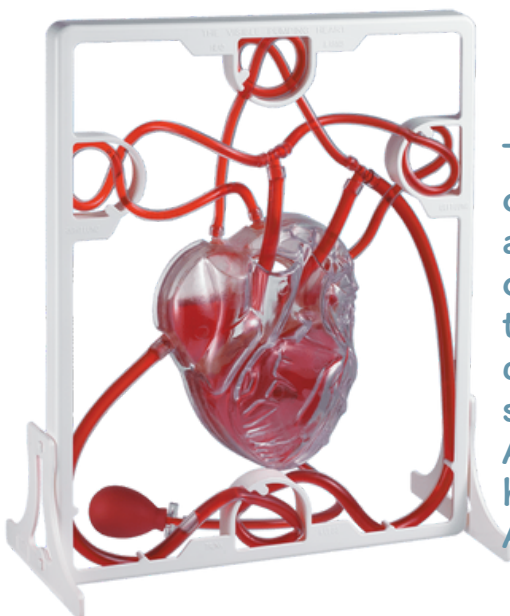
Assembly guide included.

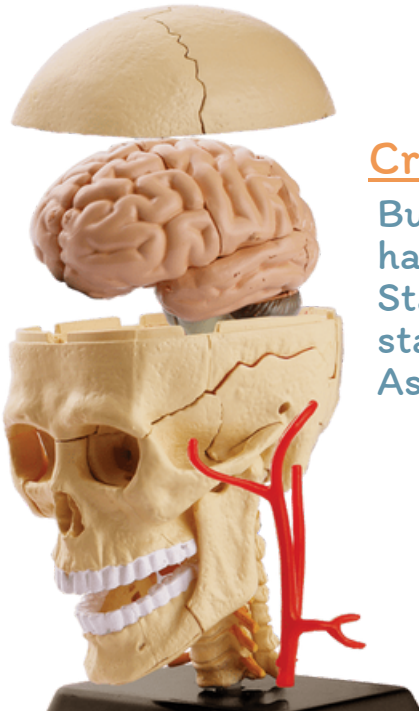


## Pumping Heart

The 3D working plastic heart features a detailed clear heart with chambers that represent the atria and ventricles. Veins and arteries of clear tubing connect to body parts shown by the engravings on the display stand. The veins and arteries can be detailed for a more realistic look with the paints supplied.

A 'squeeze bulb' pump allows you to demonstrate how blood flows through the clear heart chambers. Assembly guide included. Stands 28cm high.





## Cranial Nerve Skull – With Stand – 9cm – 39Pc

Build your own 3D model of the human ear with 14 hand-painted parts.  
Stands 8cm high once fully assembled on the display stand.  
Assembly guide included.

## Ear Anatomy Model With Stand – 7.7cm 14Pc

Build your own 3D model of the human ear with 14 hand-painted parts.  
Stands 8cm high once fully assembled on the display stand.  
Assembly guide included.



## Human Skeleton

Build this life-size model of the human skeleton with a movable lower jaw. Stands 160cm high. The sturdy metal stand with wheels enables you to move it around as needed. Perfect for your laboratory! Assembly guide included.



## Mini Skeleton With Stand – 46cm

This desktop model of the human skeleton will help demonstrate the bones in the human body. Durable design with sturdy stand included. Stands 46cm high. Perfect for your classroom!



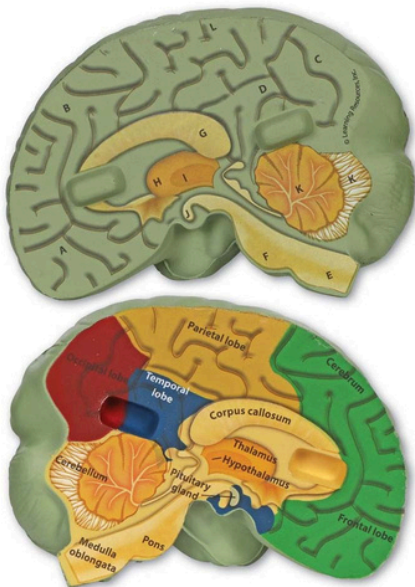


## Anatomy Model – Eyeball – 31pcs

This 3 dimensional model of the human eye can be constructed by hand and assembled onto a display stand to stand 14cm high. Highly detailed finish

Display stand  
Includes:

- 35 Pieces
- Display Stand



## Cross - Section Brain Model

understand the complexities of the human brain is easy with this labeled cross-section model. One half is labeled with the parts of the brain and the other has with letters only for test preparation purposes. An Activity Guide is included with detailed information on the human brain and how it functions. Item size: 14 x 16 x 14 cm

## Cross-Section Animal Cell Model

The soft foam cell splits in half to show the key parts of an animal cell, including the nucleus, nucleolus, vacuole, centrioles, cell membrane and more.

One hemisphere is labelled with the parts of the cell; the other features only letters next to each cell part, making it a natural tool for your child to practice for his next test at home.

A Reference Guide is included, providing activity ideas and facts about animal cells. Coordinates with magnetic cell model.

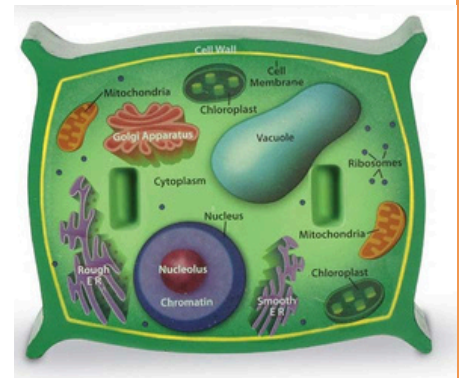
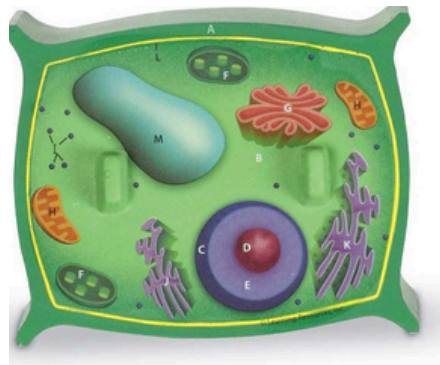
Item size: 15 x 16 x 15 cm



## Cross-Section Plant Cell Model

This model of a plant cell splits in half to provide a cross-section view and make learning the parts of a plant cell easy. One half of the colourful foam model is labelled with the parts of the cell, and the other is labelled with letters only. Included Activity Guide provides detailed information on plant cells.

Item size: 15 x 16 x 15 cm



## Microscope Kit - Die-cast with Smartphone Adapter

This Die-Cast Microscope Set 100x to 1200x zoom functionality allowing you to view all the details!

Explore the tiny world with ease through your screen when your smartphone is on video mode - you won't believe the incredible images you can capture.

A smartphone adapter is

included in order to attach your device to the Die-Cast Microscope.

Includes:

- 1 x Microscope
- 2 x Prepared Slides
- 1 x Micro Slicer
- 10 x Blank Slides
- 12 x Blank Labels
- 12 x Statical Slide Covers
- 12 x Cover Glasses
- 3 x Collecting Vials
- 1 x Petri Dish with Magnifier
- 1 x Scalpel
- 1 x Tweezers
- 1 x Button Cell
- 1 x Smartphone Adapter
- Instruction Manual



Item size: 35 x 26 x 8 cm.